



NUMBER: 08-041-15

GROUP: Electrical

DATE: April 29, 2015

This bulletin is supplied as technical information only and is not an authorization for repair. No part of this publication may be reproduced, stored in a retrieval system, or transmitted, in any form or by any means, electronic, mechanical, photocopying, or otherwise, without written permission of FCA US LLC.

HELP USING THE wiTECH DIAGNOSTIC APPLICATION FOR FLASHING AN ECU IS AVAILABLE BY SELECTING “HELP” THEN “HELP CONTENTS” AT THE TOP OF THE wiTECH DIAGNOSTIC APPLICATION WINDOW.

THE wiTECH SOFTWARE LEVEL MUST BE AT 15.04 OR HIGHER TO PERFORM THIS PROCEDURE.

SUBJECT:

Front Heated Seats Improvements

OVERVIEW:

This bulletin involves updating the Heated Seat Module (HSM) and replacing both front cushion, heater elements.

MODELS:

2013-2015	(WK)	Jeep Grand Cherokee
2013-2015	(WD)	Dodge Durango

NOTE: This bulletin applies to vehicles built on or before August 22, 2014 (MDH 0822XX) equipped with Heated Front Seats (Sales Codes JPM) and WITHOUT Ventilated Front Seats (Sales Codes CAJ).

SYMPTOM/CONDITION:

The customer may experience the heated seat feature may not control the temperature properly. The seat temperature could either be too warm or cold.

DIAGNOSIS:

Using a Scan Tool (wiTECH) with the appropriate Diagnostic Procedures available in TechCONNECT, verify that no Diagnostic Trouble Codes (DTCs) are set. If DTCs are present, record them on the repair order and repair as necessary before proceeding further with this bulletin.

If the customer describes the symptom/condition listed above, perform the Repair Procedure.

PARTS REQUIRED:

Qty.	Part No.	Description
2	68206429AB	Element, Heated Seat, Bottom (JPM Without CAJ)

REPAIR PROCEDURE:

NOTE: Install a battery charger to ensure battery voltage does not drop below 13.2 volts. Do not allow the charging voltage to climb above 13.5 volts during the flash process.

NOTE: If this flash process is interrupted/aborted, the flash should be restarted.

1. Reprogram the HSM with the latest software. Detailed instructions for flashing control modules using the wiTECH Diagnostic Application are available by selecting the "HELP" tab on the upper portion of the wiTECH window, then "HELP CONTENTS." This will open the Welcome to wiTECH Help screen where help topics can be selected.

CAUTION: Be very careful when pulling the old heating element off the cushions, so not to damage the foam cushion.

2. Replace both front heated seat elements on the cushions. Follow procedure in TechConnect, 08 - Electrical/8G - Heated/Cooled Systems/Heated Seats/PAD, Heater/Removal/Installation.



Fig. 1 Remove Heater Element

Slowly peel off one section at a time.

NOTE: On some vehicles the Occupant Detection Sensor (ODS) is part of the passenger seat cushion and shouldn't need to be replaced.

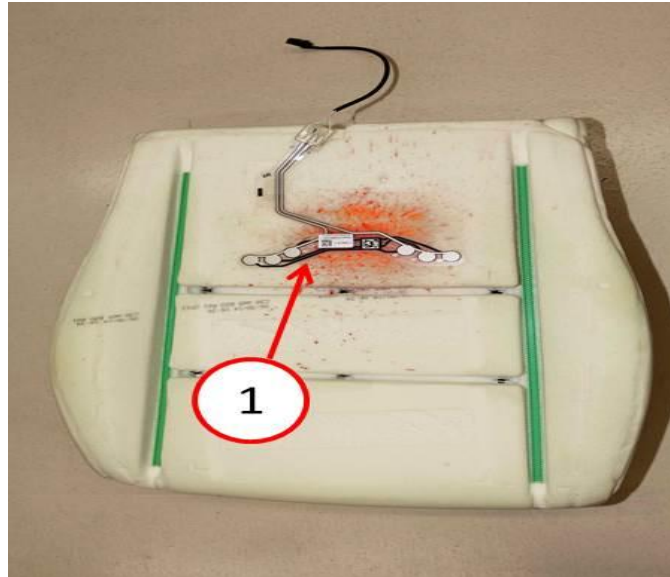


Fig. 2 Occupant Detection Sensor (ODS)

1 - Location of ODS

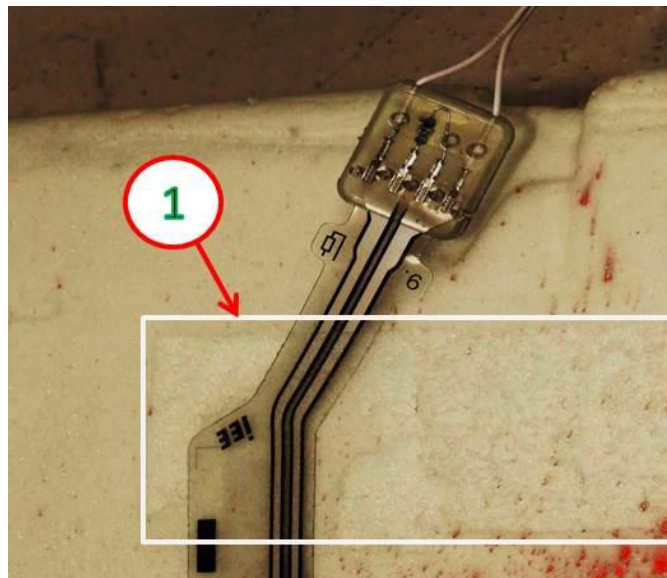


Fig. 3 Heater Element Adhesion Area

1 - Element is adhered to the sensor/cushion in this area. Hold ODS when peeling off element.

3. Clear any DTCs that may have been set in all modules due to reprogramming. The wiTECH application will automatically present all DTCs after the flash and allow them to be cleared.

POLICY:

Reimbursable within the provisions of the warranty.

TIME ALLOWANCE:

Labor Operation No:	Description	Skill Category	Amount
23-20-38-95	Front Seat Cushion - Replace Both Sides; Module, Heated Seat - Reprogram (1 - Semi-Skilled)	6 - Electrical and Body Systems	1.6 Hrs.

NOTE: The expected completion time for the flash download portion of this procedure is approximately 1 minutes. Actual flash download times may be affected by vehicle connection and network capabilities.

FAILURE CODE:

ZZ	Service Action
----	----------------