



NUMBER: 23-040-11

GROUP: Body

DATE: October 27, 2011

This bulletin is supplied as technical information only and is not an authorization for repair. No part of this publication may be reproduced, stored in a retrieval system, or transmitted, in any form or by any means, electronic, mechanical, photocopying, or otherwise, without written permission of Chrysler Group LLC.

SUBJECT:

Outer Belt Weatherstrip Cladding Tarnished And/Or Missing End Caps

OVERVIEW:

This bulletin involves removing all door plate carriers and replacing all front and rear door outer belt weatherstrip moldings.

MODELS:

2011 (WK) Grand Cherokee

NOTE: This bulletin applies to vehicles built prior to October 05, 2011 (MDH 1005XX).

SYMPTOM/CONDITION:

The customer may experience stainless cladding tarnish, poorly fitting outer belt weatherstrip and/or missing end caps.

DIAGNOSIS:

If the customer describes the symptom, perform the Repair Procedure.

PARTS REQUIRED:

Qty.	Part No.	Description
1	55399290AC	WEATHERSTRIP- Front Door Belt Outer (RF)
1	55399291AC	WEATHERSTRIP- Front Door Belt Outer (LF)
1	55399292AC	WEATHERSTRIP- Rear Door Belt Outer (RR)
1	55399293AC	WEATHERSTRIP- Rear Door Belt Outer (LR)

SPECIAL TOOLS/EQUIPMENT REQUIRED:

NPN	Hook/Pick Tool or Equivalent
-----	------------------------------

REPAIR PROCEDURE:

1. Remove both side front and rear door plate carriers. Refer to the detailed procedures available in DealerConnect>TechCONNECT> under: Service Info> 23-Body> Door - Front/Rear> PLATE, Carrier> Removal.
2. Remove the outer belt molding retaining fasteners (1) (Fig. 1).

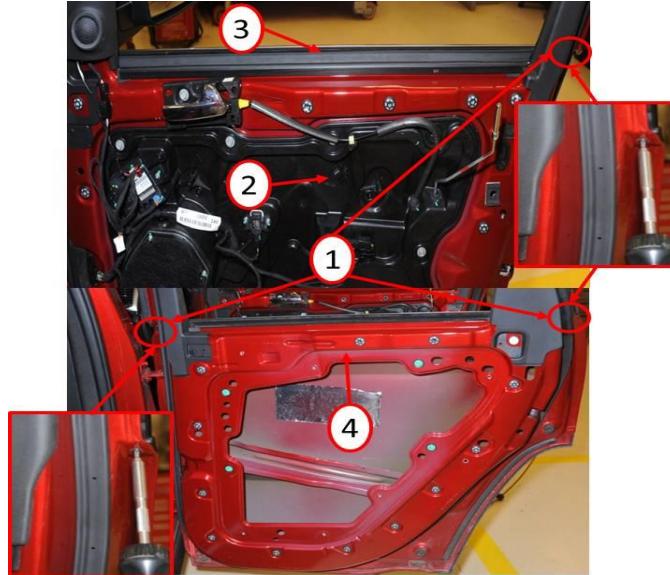


Fig. 1 Fastener Removal

- 1 - Retaining Fastener Locations
 - 2 - Front Door Plate Carrier
 - 3 - Front Door Belt Molding
 - 4 - Rear Door (Plate Carrier Removed)
-

3. Remove the outer door belt weatherstrips (2) using a hooked pick tool or equivalent (1) to unhook the retaining lip (3) of the belt molding and slide it off of the door (Fig. 2) & (Fig. 3).

NOTE: Do not pull up on the door belt moldings (2) unless retaining lip (3) is fully detached as this will bend the metal retaining tabs which secure the retaining lip of the belt molding (Fig. 2) & (Fig. 3).

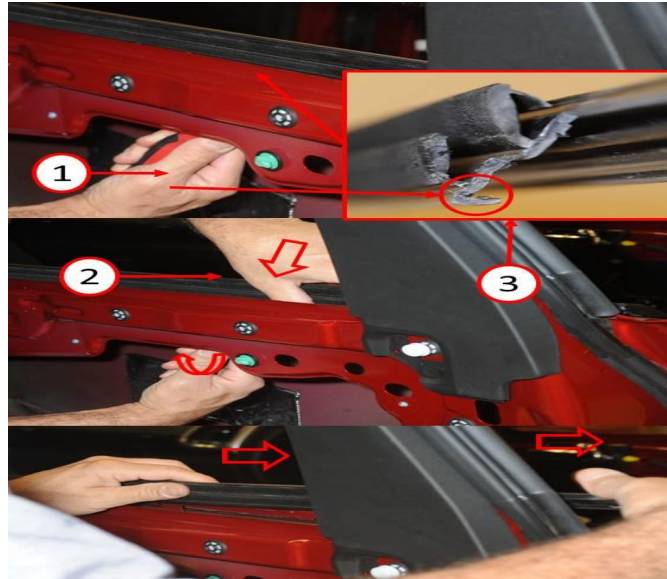


Fig. 2 Belt Molding Removal

- 1 - Hook / Pick Tool
 - 2 - Rear Door Belt Molding
 - 3 - Belt Molding Retaining Lip
-

4. Bend any metal retaining tabs (1) flat before reinstalling the new belt moldings or this will cause loose retention and poor fit of the belt molding and its retaining lip (2). Reinstall the new belt moldings (3) from above the outer door skin (4) and seat the retaining lip under the metal retaining tabs using firm downward pressure against the belt molding.

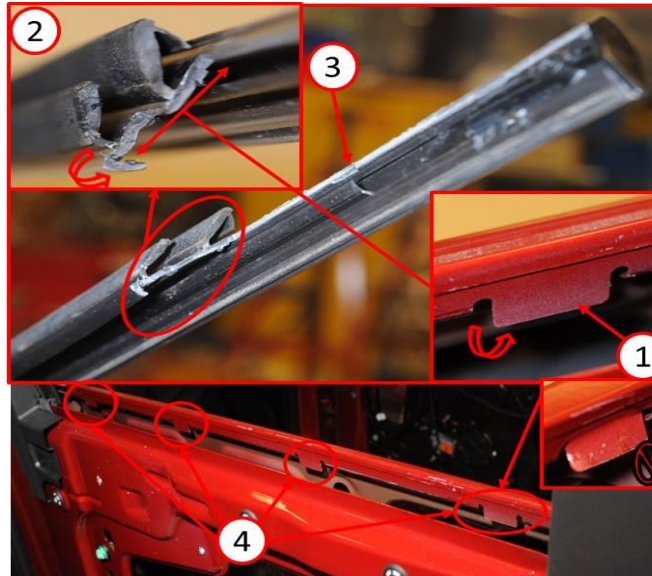


Fig. 3 Belt Molding Installation

- 1 - Metal Retaining Tab
 - 2 - Belt Molding Retaining Lip
 - 3 - Belt Molding (Backside Shown)
 - 4 - Outer Door Skin (Metal Retaining Tabs Shown)
-

- 5. Reinstall both side front and rear door plate carriers. Refer to the detailed procedures available in DealerConnect>TechCONNECT> under: Service Info> 23-Body> Door - Front/Rear> PLATE, Carrier> Installation.

POLICY:

Reimbursable within the provisions of the warranty.

TIME ALLOWANCE:

Labor Operation No:	Description	Amount
23-51-16-94	Replace All Door Outer Belt Weatherstrips (B)	2.6 Hrs.

FAILURE CODE:

ZZ	Service Action
----	----------------